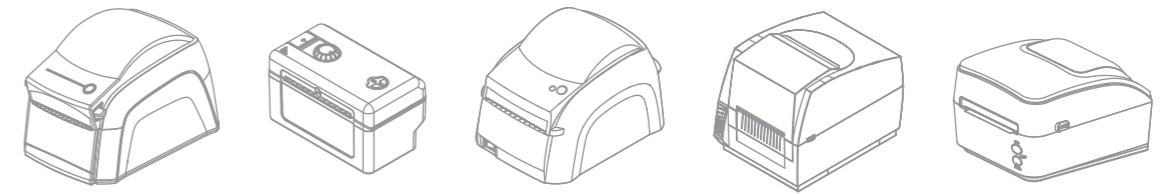


Product Guide

LABEL PRINTER



Benefit from The Smart Labeling Solution by SEWOO LK-B series.

LK-B series provides reliable performance with stable maintenance. It is easy to use and cost effective printers for various businesses reliant on barcode and tagging needs. The LK-B series provides versatility and easy-of-use in adjusting to a wide range of business applications such as: warehouse management, postal service, healthcare, manufacturing, and retail.

Key feature

Compact Design

SEWOO Label printers are compactly designed, minimizing the space needed for printers in the field. Yet our printers still contain a large paper capacity (ø127mm diameter in paper roll) for industrial use.

Various Sensors

SEWOO Label printers utilize Label gap sensors, Notch sensors, and Black mark sensors to fit various types of label papers in all fields and industries.

Wide Paper width up to 20 ~ 114mm



SEWOO Label Printer provides a wide range of width of the label, minimum 20mm to maximum 114mm.

Convenient Replacement of Consumable Parts

SEWOO Label printers are designed to be user-friendly. Thermal Printer head is easily removed with a coin and replaced. Simplicity in repair reduces costs and saves time.

Easy Cutting and Peeling Options added in Modular Format

SEWOO Label printer is used in a variety of fields such as retail, airport, warehouse management and etc.



LK-B30II



LK-B30IIE



LK-B425



LK-B24



LK-B20II / 230II



Delivery



Laboratory



Hospital



Warehouse



LK-B230IIR



Tracking



Personnel Management



Inventory



Airport

LK-B30II



LK-B30IIE
NEW



PRODUCT		LK-B30II	LK-B30IIE
PRINTING	METHOD	Direct thermal	Direct thermal
	SPEED	152mm/sec	152mm/sec
	WIDTH	104mm (4.1")	108mm (4.25")
	LENGTH	1,000mm (39.3")	1,000mm (39.3")
	RESOLUTION	203 DPI (8 dots/mm)	203 DPI (8 dots/mm)
BARCODE	1D	Code39, Code128 with subsets A/B/C/Auto, UCC/EAN-128, Code93, Codabar, Interleaved 2 of 5, UPC-A, UPC-E, UPC-A and E with 2 or 5 digit extension, EAN-8, EAN-13, EAN-8 and 13 with 2 or 5 digit extensions, Postnet, Plessey, MSI-3, German Post CodeLogmars, Code11, UPC_Interleaved 2 of 5, Industrial 2 of 5, Standard 2 of 5, Planet, ANSI, Logmars	
	2D	MaxiCode, PDF 417, Data Matrix, QR Code, MicroPDF417, AZTEC, Code 49, CODABLOCK, RSS	
FONT SPECIFICATION	EPLII	6 bitmapped 8x12, 10x16, 12x20, 14x24, 32x48, 24x24(KSC5601)	
	ZPLII	9 bitmapped 5x9, 7x11, 10x18, 10x18, 15x28, 13x26, 40x60, 13x21, 24x24 2 smooth scalable(English, Korean)	
PAPER	TYPE	Roll, Fanfold, Blackmark, Continuous, Gap, Notch Sensor	Roll, Fanfold, Blackmark, Continuous, Gap, Notch Sensor
	WIDTH	22~ 114mm	25.4~115mm
	THICKNESS	0.065 ~ 0.20mm	0.060 ~ 0.20mm
	ROLL DIAMETER	Internal Core : Ø 25.4(1") or Ø 38.1mm(1.5") Roll Diameter Max : Ø 127mm(5")	Internal Core : Ø 25.4(1") Roll Diameter Max : Ø 127mm
RIBBON	WIDTH		
	LENGTH		
INTERFACE	STANDARD	USB, Serial(RS-232C), Ethernet	
	OPTION	Wi-Fi(802.11a/b/g/n), Bluetooth Smart Ready (Bluetooth4.2+BLE)	
MEMORY	STANDARD	Main Flash 1MB/ SDRAM 16MB/ FONT Flash 8MB	
SERIAL BAUD RATE		Max.115,200 bps	
SENSOR	STANDARD	Gap, Black mark, Cover open	
POWER	TYPE	External SMPS	
	AC	100 ~ 240Vac, 1.5A, 50~60Hz	
	DC	24 Vdc 1.75A	24 Vdc 2.5A
CERTIFICATION		KCC, CE, CB, UL	CE,FCC,KC,UL,CB
EMULATION		EPL II, ZPL II Command compatible	
DRIVER		Windows Driver, Linux Driver, Mac Driver	
SDK		Windows SDK, Android SDK, iOS SDK	
DIMENSION	W x D x H(mm)	190 x 254 x 169	190 x 262 x 168
	W x D x H(inch)	7.48 x 10.0 x 4.29	7.48 x 10.31 x 6.61
WEIGHT		2kg	1.52kg
OPTION		External Paper Supply	Auto cutter, Peeler
AUTO CUTTER	TYPE	-	Guillotine

LK-B425



LK-B24



LK-B20II/230II



LK-B425	LK-B24	LK-B20II	LK-B230II
Direct thermal	Thermal transfer and Direct thermal	Thermal transfer and Direct thermal	
152mm/sec	127mm/sec	127mm/sec	102mm/sec
104mm (4.1")	104mm (4.1")	104mm (4.1")	
1,000mm (39.3")	1,000mm (39.3")	1,000mm (39.3")	
203 DPI (8 dots/mm)	203 DPI (8 dots/mm)	203 DPI (8 dots/mm)	300 DPI (12 dots/mm)
Code39, Code128 with subsets A/B/C/Auto, UCC/EAN-128, Code93, Codabar, Interleaved 2 of 5, UPC-A, UPC-E, UPC-A and E with 2 or 5 digit extension, EAN-8, EAN-13, EAN-8 and 13 with 2 or 5 digit extensions, Postnet, Plessey, MSI-3, German Post CodeLogmars, Code11, UPC_Interleaved 2 of 5, Industrial 2 of 5, Standard 2 of 5, Planet, ANSI, Logmars			
MaxiCode, PDF 417, Data Matrix, QR Code, MicroPDF417, AZTEC, Code 49, CODABLOCK, RSS			
6 bitmapped 8x12, 10x16, 12x20, 14x24, 32x48, 24x24(KSC5601)			
9 bitmapped 5x9, 7x11, 10x18, 10x18, 15x28, 13x26, 40x60, 13x21, 24x24 2 smooth scalable(English, Korean)			
Roll, Fanfold, Blackmark, Continuous, Gap, Notch Sensor	Roll, Fanfold, Blackmark, Continuous, Gap	Roll, Fanfold, Tag, Blackmark, Continuous, Gap, Notch Sensor	
25 ~ 114mm	20 ~ 114mm	18 ~ 118mm	
0.065 ~ 0.20mm	0.065 ~ 0.20mm	0.065 ~ 0.20mm	
Internal: Ø 25.4(1") or Ø 38.1mm(1.5") External: Ø 127mm(5")	Internal Core : Ø 25.4(1") or Ø 38.1mm(1.5") Roll Diameter Max : Ø 127mm(5")	Internal Core : Ø 25.4(1") or Ø 38.1mm(1.49") Roll Diameter Max : Ø 127mm(5")	
110mm (4.3")	110mm (4.3")	33~110mm (1.3 ~ 4.3")	
75M, Ø 35mm (1.3")	75M, Ø 35mm (1.3")	360M, Ø 67mm (2.63")	
USB, Serial(RS-232C), Ethernet	USB, Serial(RS-232C), Ethernet	USB, Serial(RS-232C), Ethernet	
Wi-Fi(802.11a/b/g/n), Bluetooth Smart Ready (Bluetooth4.2+BLE)	Wi-Fi(802.11a/b/g/n), Bluetooth Smart Ready (Bluetooth4.2+BLE)	Wi-Fi(802.11a/b/g/n), Bluetooth Smart Ready (Bluetooth4.2+BLE)	
Main Flash 1MB/ SDRAM 16MB/ FONT Flash 8MB	Main Flash 1MB/ SDRAM 16MB/ FONT Flash 8MB	Main Flash 1MB/ SDRAM 16MB/ FONT Flash 8MB	
Max.115,200 bps	Max.115,200 bps	Max.115,200 bps	
Gap, Black mark, Cover open	Gap, Black mark, Cover open, Ribbon encoder	Gap, Black mark, Cover open, Ribbon encoder	
External SMPS	External SMPS	External SMPS	
100 ~ 240Vac, 1.5A, 50~60Hz	100 ~ 240Vac, 1.5A, 50~60Hz	100 ~ 240Vac, 1.5A, 50~60Hz	
24 Vdc 1.75A	24 Vdc 2.5A	24 Vdc 2.5A	
KCC, CE, CB, CCC	FCC, KCC, UL/cUL, CE, CB	KCC, CE, CB	
EPL II, ZPL II Command compatible	EPL II, ZPL II Command compatible	EPL II, ZPL II Command compatible	
Windows Driver, Linux Driver, Mac Driver	Windows Driver, Linux Driver, Mac Driver	Windows Driver, Linux Driver, Mac Driver	Windows Driver
Windows SDK, Android SDK, iOS SDK	Windows SDK, Android SDK, iOS SDK	Windows SDK, Android SDK, iOS SDK	
182 x 120 x 123	216.2 x 250.5 x 160.65	215 x 287 x 231	
7.16 x 4.72 x 4.48	8.5 x 9.8 x 6.3	8.46 x 11.3 x 9.09	
1.5kg	1.9kg	3.6kg	
Auto Cutter, External Paper Supply	External Paper Supply	Peeler, Auto Cutter, External Paper Supply	
Guillotine	-	Guillotine	

LK-B230IIR



PRODUCT		LK-B230IIR
PRINTING	METHOD	Thermal transfer and Direct thermal
	SPEED	102mm/sec
	WIDTH	104mm (4.1")
	LENGTH	Max.1000mm
	RESOLUTION	300 DPI (12 dots/mm)
BARCODE	1D	Code39, Code128 with subsets A/B/C/Auto, UCC/EAN-128, Code93, Codabar, Interleaved 2 of 5, UPC-A, UPC-E, UPC-A and E with 2 or 5 digit extension, EAN-8, EAN-13, EAN-8 and 13 with 2 or 5 digit extensions, Postnet, Plessey, MSI-3, German Post CodeLogmars, Code11, UPC, Interleaved 2 of 5, Industrial 2 of 5, Standard 2 of 5, Planet, ANSI, Logmars
	2D	MaxiCode, PDF 417, Data Matrix, QR Code, MicroPDF417, AZTEC, Code 49, CODABLOCK, RSS
FONT SPECIFICATION	BITMAP FONT	6 bitmapped 8x12, 10x16, 12x20, 14x24, 32x48, 24x24(KSC5601)
	SCALABLE FONT	9 bitmapped 5x9, 7x11, 10x18, 10x18, 15x28, 13x26, 40x60, 13x21, 24x24 2 smooth scalable(English, Korean)
PAPER	TYPE	Roll, Fanfold, Tag, Blackmark, Continuous, Gap, Notch Sensor
	WIDTH	18~118mm (0.7"~4.64")
	THICKNESS	0.065 ~ 0.20mm
	ROLL SIZE	127mm (5.0")
RIBBON	TYPE	Thermal Ribbon(Wax, Resin, Wax-Resin) Core Internal Diameter : 25.4mm (1")
	WIDTH	33mm ~ 110mm (1.3" ~ 4.3")
	LENGTH	360M, Ø 67mm (2.63")
MEMORY	STARNDARD	Flash 1MB(in CPU), SDRAM 16MBSerial Flash 8MB, EEPROM 2KB
SERIAL BAUD RATE		Max.115,200bps
SENSOR	STARNDARD	Gap, Black mark, Ribbon Encoder, Cover Open
RFID	OPERATING FREQUENCY	900MHz
	SUPPORT TAG	ISO 15693, ISO 14443A
	RF POWER	30dbm ± 1dbm(1W)
	MODULATION	PR-ASK
	RFID Spec Supported	Auto error check (100% Verifying after printing if tag is defective)
TEMPERATURE	OPERATING TEMPERATURE	5 ~ 40°C
	STORAGE TEMPERATURE	-20 ~ 60°C
HUMIDITY	OPERATING HUMIDITY	35 ~ 80%
	STORAGE HUMIDITY	10 ~ 90%
INTERFACE	STANDARD	USB, Serial, Ethernet
DRIVER		Windows Printer Driver, Windows SDK
PROGRAMMING LANGUAGE		EPL II, ZPL II Command compatible
DIMENSION	W x D x H(mm)	215 x 287 x 231
	W x D x H(inch)	8.46 x 11.29 x 9.09
WEIGHT		7.39lbs/3.6kg

Accessories (Options)

Paper supply

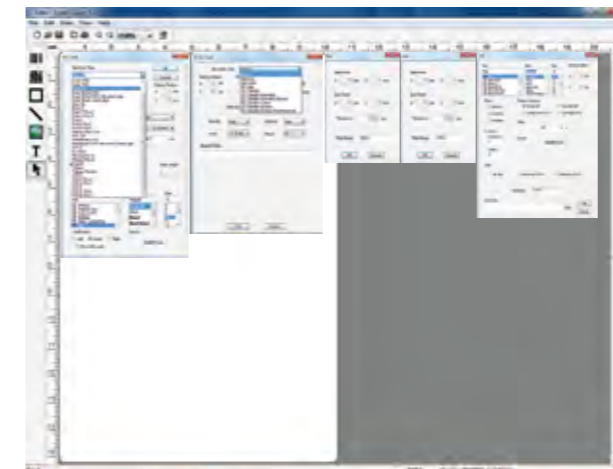


LK-B20II / LK-B230II



LK-B425

Print Editing Software



Windows®-based



Label Cooker

Description

Label Cooker is for basic barcode label and tag design solution that can easily design edit and print labels, tags, and receipts. It supports 30 different types of 1D barcode and 10 different types of 2D barcode to suit various barcode and data printing needs.

Benefit

- The menus allow for simple use of frequently used functions
- Easy to set up, an intuitive edit method reduces training time for trainees
- A wide range of more than 50 barcode choices suitable for users to input various data
- Supports more than 19 graphic formats including JPG, BMP, PNG that enable the input of various images and design labels

Labeling Sample

You can design your own labels through SEWOO's Label Cooker and print a variety of labels as shown below.



You can download our Label Cooker on our website without any charges.